

Buried Installation

Buried single installation

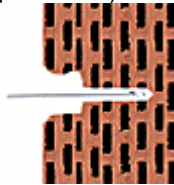
Why do I need the LB lance drill and the USA buried clamp automatic?

For the installation of a flexible pipe (hose) buried – no plastering!



Assembly procedure

1. Use the lance drill to drill a 6 mm hole
Drilled depth = anchor length + 5 mm, rotary drilling (no percussion)



2. Insert USA buried clamp automatic



3. Tighten hose and press into clip



4. That's it!



Buried double installation

Why do I need the LB lance drill and the USD buried clamp double?

For the installation of flexible pipes (hoses) buried – no plastering!



Assembly procedure

1. Use the lance drill to drill a 6 mm hole,
Drilled depth = anchor length + 5 mm, rotary drilling (no percussion)



2. Insert USD buried clamp double



3. Insert hoses



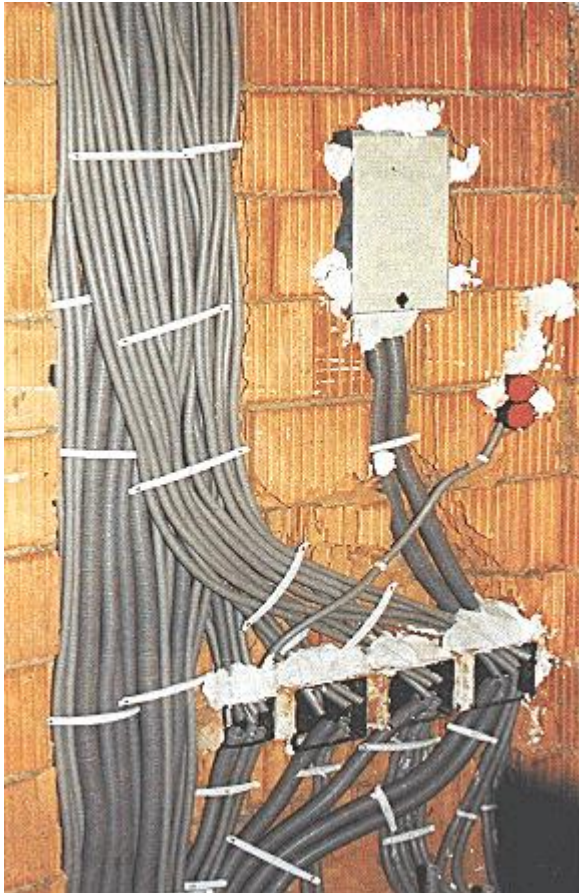
4. Press in USD – that's it!



Section installation buried

Why do I need the LB lance drill, the TA support anchor and the TB terrace bracket?

For the section installation of flexible pipes (hoses) buried – no plastering!

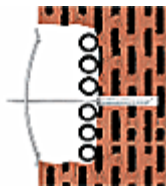


Assembly procedure

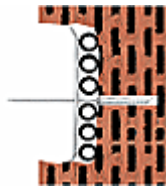
1. Use the lance drill to drill a 6 mm hole and insert TA support anchor



2. Pre-snap TB terrace bracket and insert hoses



3. Press TB terrace bracket tightly



4. For restocking, repeat installation procedure from step 2

